

WJ Smith Linen Service

Proudly Serving the North East of Victoria



A DIVISION OF
NORTHEAST
HEALTH
WANGARATTA

water



Linen Service Water reduction.

Presented by Clayton Henderson



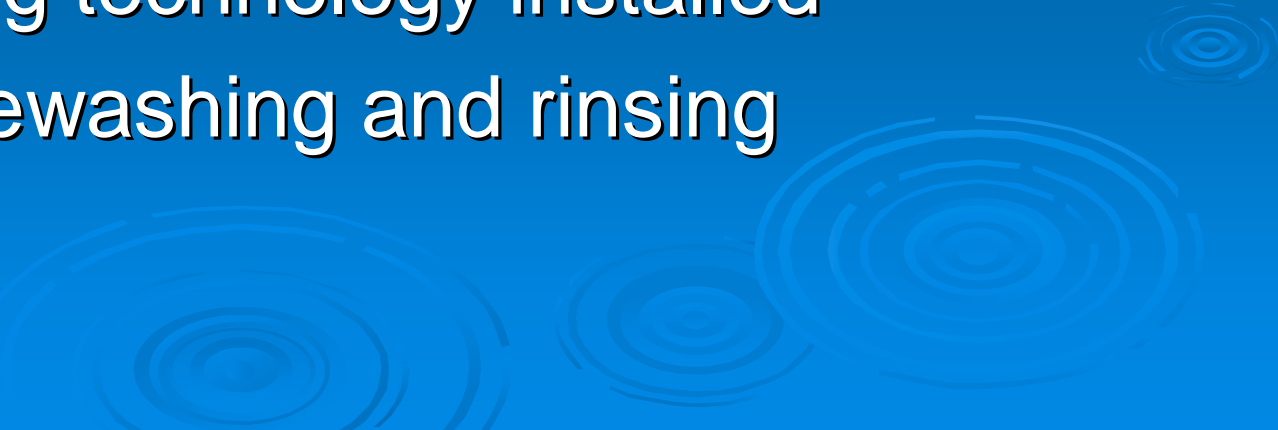
Every Drop of water counts.



**How many drops does
Laundry improvements count for?**




What has improved in the last year.

- Ø Review of the washing cycles
 - Ø Less chemicals used in process
 - Ø Low Alkaline chemicals used
 - Ø New ironing technology installed
 - Ø Lowered rewashing and rinsing
- 

Changes to Chemicals

- ∅ Chlorine Bleach to Hydrogen Peroxide
- ∅ Low Alkali wash chemical used
- ∅ Rinsing chemical increased

Residual Chemical the key

- ∅ Reduce the Chemical Use
 - ∅ Using PH stable chemicals
 - ∅ Less rinse water used
 - ∅ PH stabilized on waste water
 - ∅ Less returned linen for rinsing
 - ∅ More useful grey water?
- 



One bed sheet is 1KG of dry linen


The reductions in water use with healthcare wash

- ∅ Water use @ January 06 31ltrs/kg
- ∅ Change Bleaching agent - 27ltrs/kg
- ∅ Change to Low Alkali – 23ltrs/kg
- ∅ Change washing cycles – 20ltrs/kg


Annual Savings of 16 mega litres

**With no capital cost & reduced operating
expenses!**

Outlook to future improvements

- ∅ Reviewing all wash cycles
 - ∅ Installing new Washing equipment
 - ∅ Installing storm water tanks
 - ∅ Water recycling plant
 - ∅ Grey water use by Council & NEW
 - ∅ Using solar water heating
- 
- The bottom right corner of the slide features a decorative graphic of several concentric, light blue circles of varying sizes, resembling ripples on water, set against the dark blue background.

Implementing Water Infrastructure in laundries *The Problems!*

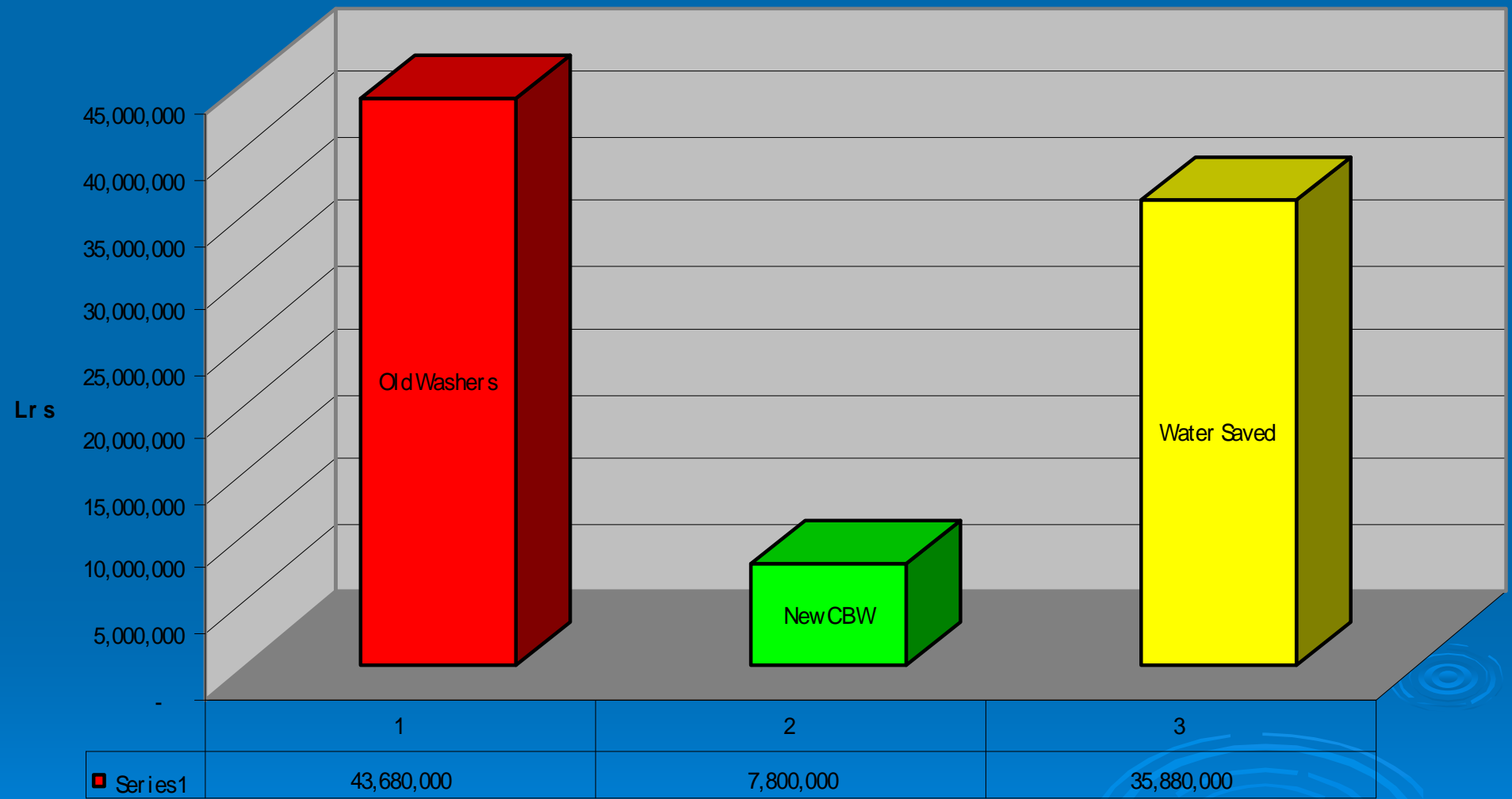
- ∅ Current water cost very low
 - ∅ Water projects need same capital return
 - ∅ Water is not the primary role to community
 - ∅ Laundry requires high capital investment
- 

Selling Water change

- ∅ Economical justified
- ∅ Commercial sound
- ∅ Fit into operating plans
- ∅ Make people visualise savings



Water Savings With CBW



Between 30-35 Mega Litres of water saved a year

Town	Ave. Annual Consumption ML/year			Percentage of the towns use a CBW can save
Bright	550	We Can	Save	6%
Dartmouth	50	We Can	Save	63%
Devenish	20	We Can	Save	157%
Glenrowan	90	We Can	Save	35%
Goorambat	20	We Can	Save	157%
Harrietville	60	We Can	Save	52%
Moyhu	50	We Can	Save	63%
Mt. Beauty	500	We Can	Save	6%
Myrtleford	1200	We Can	Save	3%
Oxley	60	We Can	Save	52%
Porepunkah	100	We Can	Save	31%
Rutherglen	1000	We Can	Save	3%
Springhurst	30	We Can	Save	105%
St. James	20	We Can	Save	157%
Tallangatta	285	We Can	Save	11%
Tungamah	90	We Can	Save	35%
Walwa	25	We Can	Save	126%
Wangaratta	5500	We Can	Save	0.6%
Whitfield	20	We Can	Save	157%
Wodonga	8000	We Can	Save	0.4%
Yackandandah	125	We Can	Save	25%
Yarrawonga	1800	We Can	Save	2%

*Water Usage data taken from North East Water Web site

Facts from usage table

- ∅ If we installed the CBW the water saved would fully supply the township of Springhurst! (Stage 4)
- ∅ The water saved would supply 50% of Oxley or Harrietteville's needs!
- ∅ The water saved would run a number of our smaller towns for 1.5 Years i.e. Whitfield!

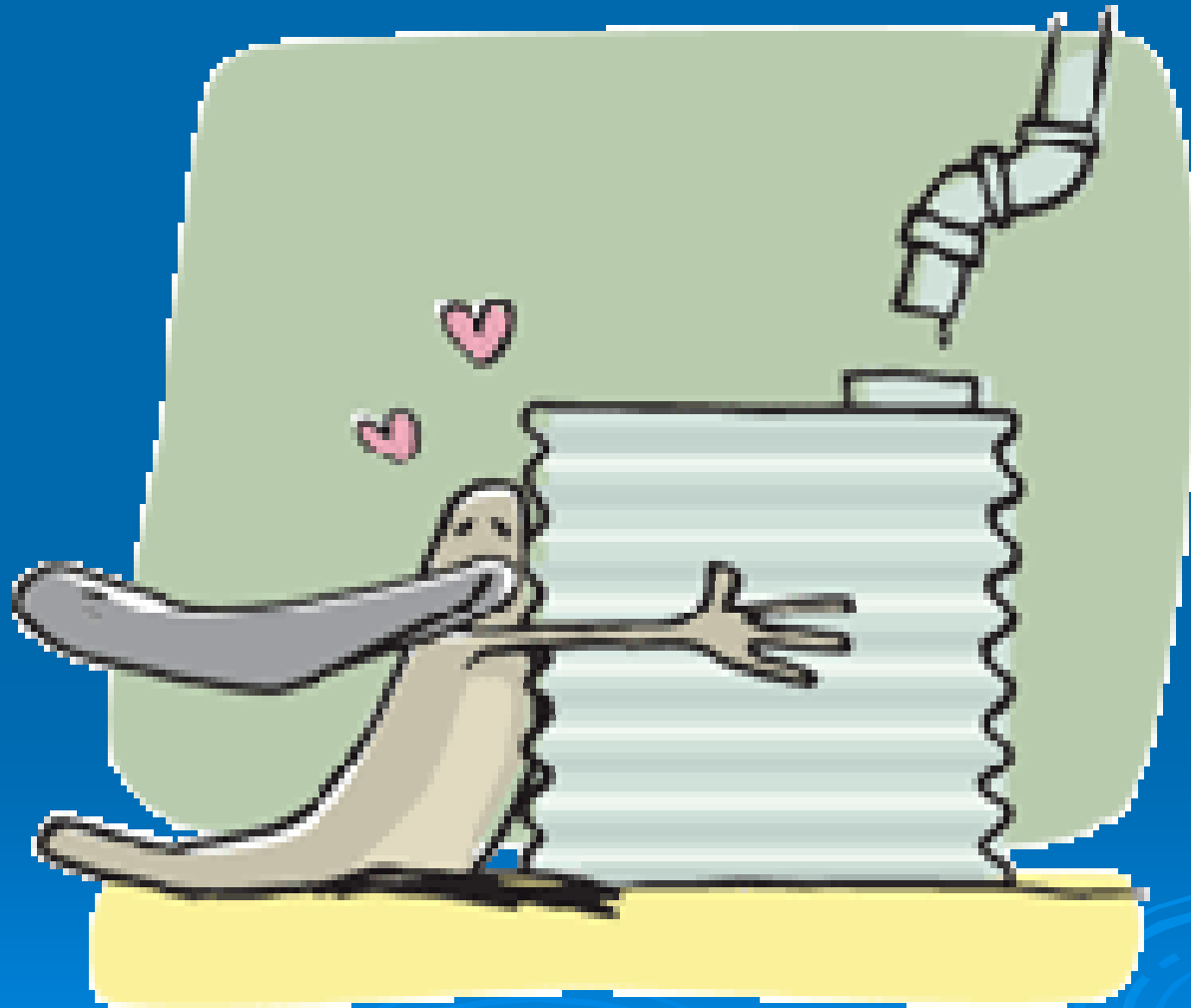
**We can save the water
to fill these 20,000L tanks!**



Every Day!!



**Current commercial costs do not relate to
community value on saving water.**



**We only save \$75 a day on the
town water costs!**



WATER

WASTE NOT

- ∅ We have wasted 630ML of water in the 20years since the CBW first proposed
- ∅ This would fill 5% of Lake William Hovell and 3% of Lake Buffalo
- ∅ The same amount of water would supply 3400 households a year, or fill 272 Olympic-sized swimming pools.

WANT NOT

Trade Waste Water



- ∅ For every litre of fresh water we use
- ∅ We discharge a litre of dirty trade waste.


Have you noted?

- ∅ Australia is one of the driest continents in the world, and yet is one of the highest users of water per capita.
- ∅ If Melbourne continues to use water at the same rate as the 1990s, water supply is likely to run out within 15 years.

Water Facts

- ∅ One third of the world's population is already facing problems due to water shortage.
- ∅ Global water consumption has risen by almost tenfold since 1900.
- ∅ The Snowy River has been reduced to about 1% of its original flow.
- ∅ Wangaratta is in one of the worst droughts in modern history this year.
- ∅ Victorian government departments have been reported as increasing their water usage by 25% last year

Quotes by Water Minister John Thwaites's

- Ø At a time when the general community is saving water, government departments must set an example.
 - Ø Any increase in water consumption by government departments is totally unacceptable
 - Ø As a result of concerns I had about the drought and government water use, before Christmas I asked the head of Treasury to ensure departments maximised water savings
 - Ø We will ensure all departments implement such water-saving measures.
- 

The current Victorian Hospitals

“Water management plan template” States:

- ∅ **Laundries**
- ∅ Consider and investigate water use when purchasing equipment
- ∅ Use a continuous-batch tunnel where volumes of laundry justify one
- ∅ Use hot water reuse systems and other water conserving technology where feasible
- ∅ Evaluate wash cycles and detergent / chemical formulations for maximum efficiency
- ∅ Wash only full loads
- ∅ Consider reuse of final wash for pre-wash or other uses

CBW is our answer to Water use management



CBW is Commercially Viable

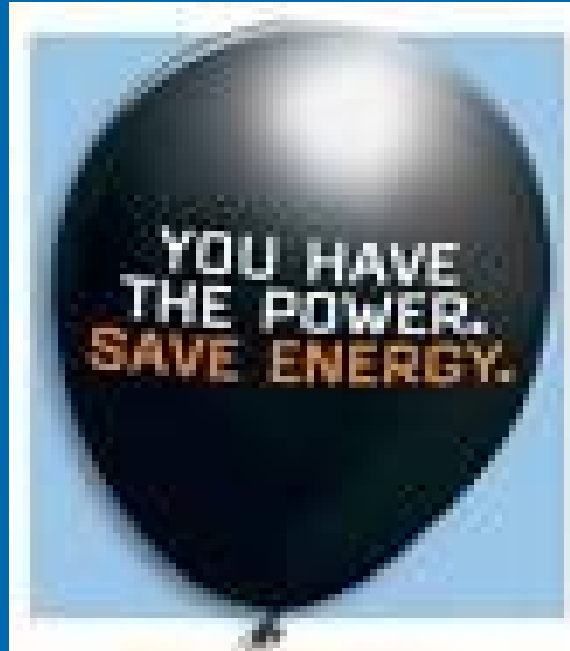
- ∅ At current workload savings gained directly from operating expenses will be more than operating lease repayments.
- ∅ Laundry Capacity will be increased significantly
- ∅ Through aggressive marketing and using the increased capacity; the laundry can become a high profit centre for the organisation
- ∅ Organisational risks are greatly reduced
- ∅ OH&S Risks are greatly reduced

Let us fix a leaking laundry



It's commercially, environmentally and ethically
the right thing to do.

As the board of one of the largest organisations in Wangaratta.



**Use your power to make a difference.
Save our Water, Energy and Community.
You will do a lot for our key role in the community
HEALTH!**

From all the Linen Service Team

Thank You for your time

WJ Smith Linen Service
Proudly Serving the North East of Victoria



A DIVISION OF
NORTHEAST
HEALTH
WANGARATTA

