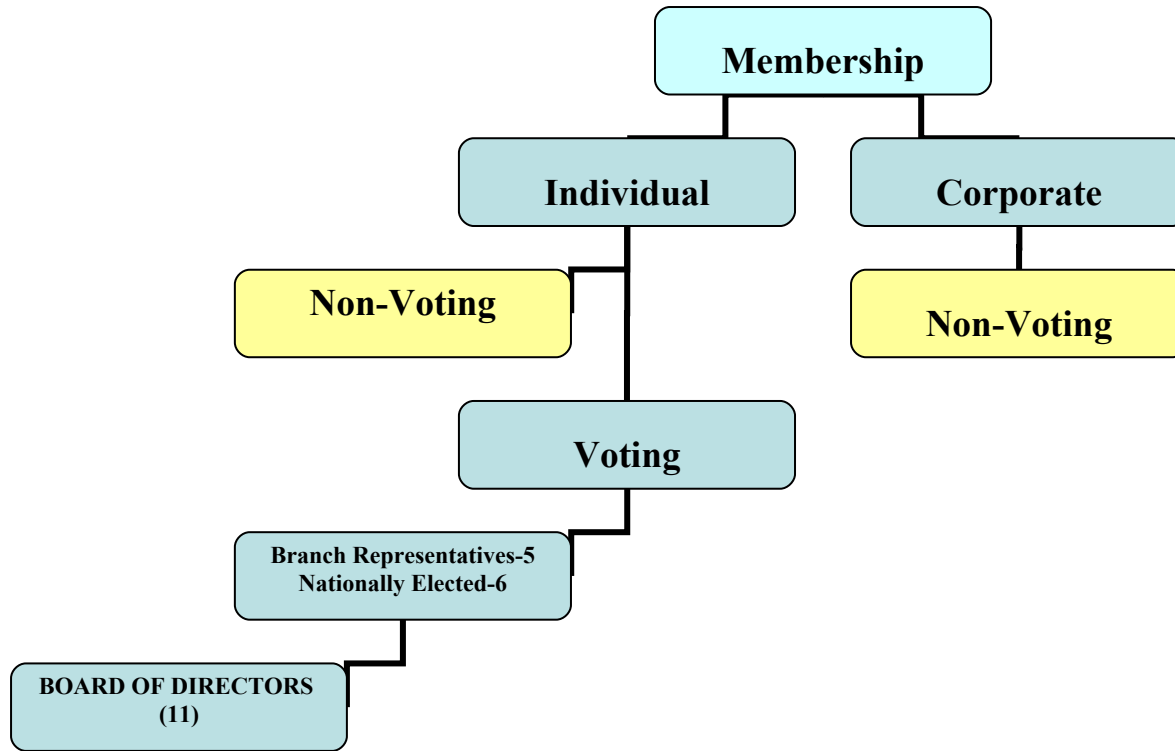


Hon Fellows	Fellow	Honorary Member	Members	Associates	Students	Corporate	Casual
<p>Institute members or any other persons, who, in the opinion of Council, have provided outstanding and meritorious service to health care engineering or the Institute. Institute members must have reached the retiring age as defined by the Australian Federal Government and have retired from employment.</p> <p>Honorary Fellowship shall be conferred only upon persons</p> <p>(i) who are distinguished by reason of their meritorious work in the field of Hospital engineering or in a branch of learning related to Hospital engineering or medical science.</p> <p>(ii) who have rendered distinguished service to the Institute.</p> <p>(iii) whose work has assisted or is likely to assist the work of the Institute and</p> <p>(iv) who are deemed worthy by the Council to be admitted to Honorary Fellowship.</p> <p>Honorary Fellowship shall be conferred by three-quarters vote of the Council and for which notice of such a vote was given</p>	<p>Degree, Diploma or Marine Certificate of competency -Extra First Class Engineer defined for Associate Grade, plus minimum five years as Member. Approved degree or diploma in management or administration from an accredited university or Institute of technology.</p> <p>Certificate defined for Associate Grade, plus minimum five years as Member.</p> <p>Minimum five years tenured or contract as head of department within a community/district Hospital or head/deputy head of department in a teaching Hospital engineering department; alternatively, ten years as senior consultant in an organisation exclusively providing management services in Hospital engineering.</p> <p>A Professional Review of approximately 3,000 words on Hospital engineering experience.</p> <p>Satisfactory interview by a panel regarding the material presented in the Professional Review and general knowledge in Hospital engineering.</p>	<p>Persons who, in the opinion of Council, have provided outstanding service to Hospital engineering or the Institute and who would not otherwise be eligible to join.</p> <p>Honorary membership shall be conferred by three-quarters of the Council and for which notice of such a vote was given.</p>	<p>Degree, diploma or Marine Certificate of Competence Extra First class Engineer defined for Associate Grade.</p> <p>Certificate defined for Associate Grade, plus minimum four years as Associate.</p> <p>Apprenticeship defined for Associate Grade, plus minimum eight years as Associate.</p>	<p>Approved degree or diploma in engineering from an accredited university or Institute of technology.</p> <p>Employed in a tenured or contract position within a Hospital engineering department; alternatively, an organisation providing engineering management services in Hospital engineering.</p> <p>Approved certificate in engineering from an accredited TAFE college or equivalent.</p> <p>Approved apprenticeship. Employed for minimum two years in a supervisory tenured or contract position within a Hospital engineering department; alternatively, five years in a principal consultant's role in an organisation providing engineering management services in Hospital engineering.</p>	<p>Currently studying an approved engineering course at an accredited university, Institute of technology or TAFE college.</p> <p>Studentship shall be limited to six years.</p> <p>A Student may apply to the Council for transfer to a higher grade when the requirements of that grade have been attained.</p>	<p>Corporate Members can be private companies or public entities being of mutual benefit to all parties, for the pursuit of Hospital Engineering Excellence through the IHEA objectives and through the support to the Corporate Member's Mission.</p>	<p>Casual member refers to non fee paying member who attends specific events organised by IHEA</p> <p>e.g. Professional Development program, National Conference</p>



Note Non voting individual members are Associate members & Non financial members of all categories